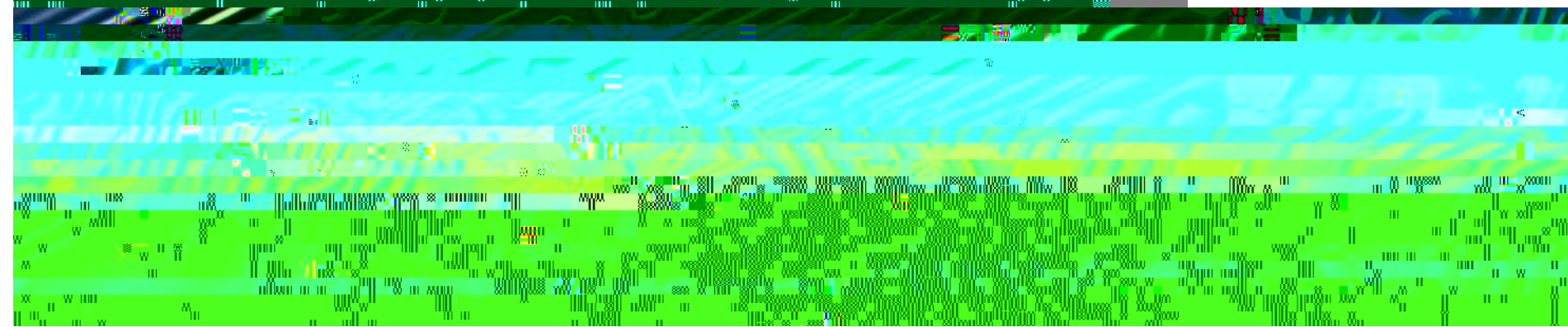


Release 6.20 UAT
OneUSG Connect

Monday, 10/5/2020



Housekeeping

‡ \$ O O S D U W L F L S D Q W V P X W H G

‡ , I F D O O L Q J L Q Y L D S K R Q H S

the call on hold

‡ 6 H V V L R Q L V E H L Q J U H F R U G H

‡ 8 V H W K H F K D W I H D W X U H I R U

‡ 4 X H V W L R Q V Z L O O E H V H Q W F

after the meeting

Monitoring Chat

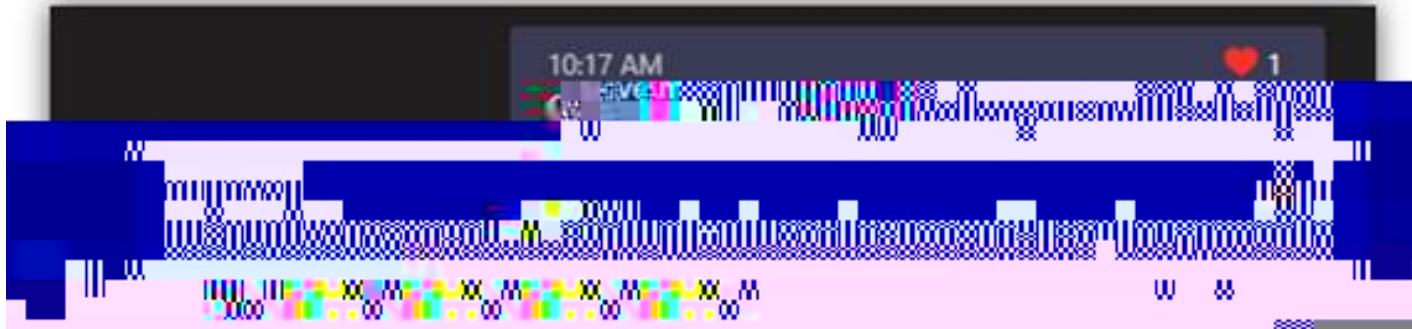
‡ & K D W Z L O O D O V R E H P R Q L



' Z H V H H W K L V D Q G D U H



' W K D Q N V W K L V K D V E H





OneUSG Connect

Release Overview

Release 6.20 Overview

‡ Release 6.20 is our annual maintenance release and consists of:

9 PeopleTools Upgrade to version 8.58

9 Application of Oracle Peoplesoft Images

‡ Images 32² 35

‡ We may not utilize all the functionality included in the we apply

9 52 BOR Modification Retrofits

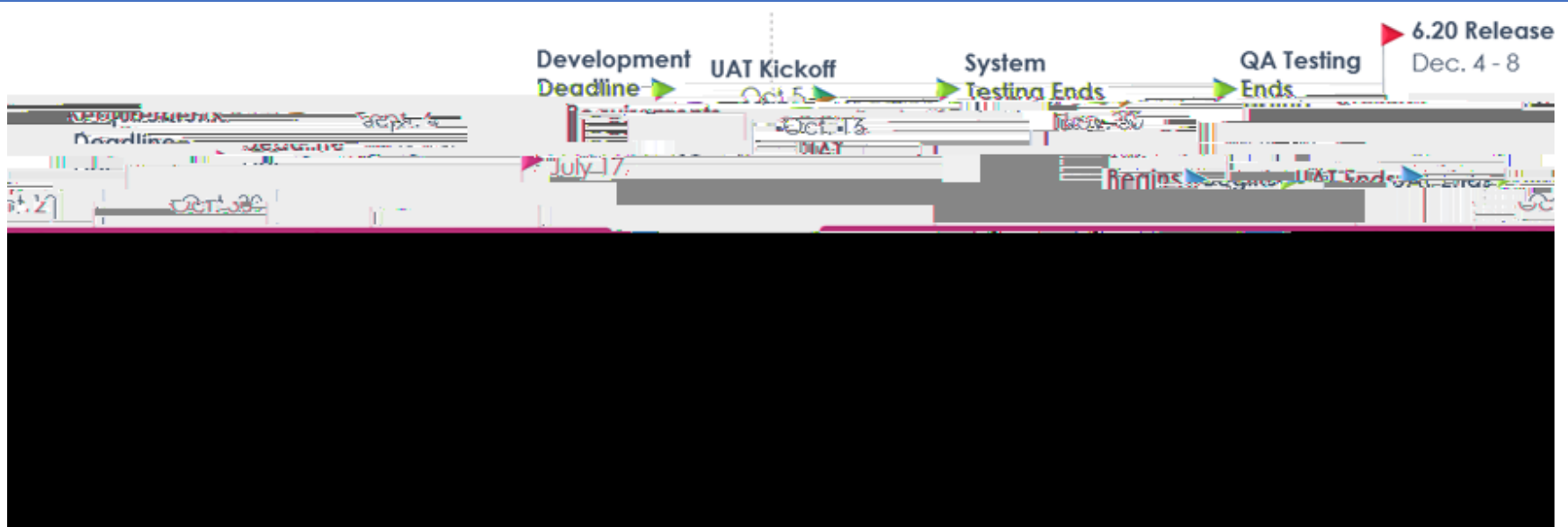


Images that

ITS will make every attempt to document the user experience changes (icons, colors, etc.) in OneUSG Connect as a result of the

Oracle/ PeopleTools updates. However, we are requesting that institutions identify and note these changes during testing so that you can effectively communicate these changes to your campus community.

HREL 6.20 Overview

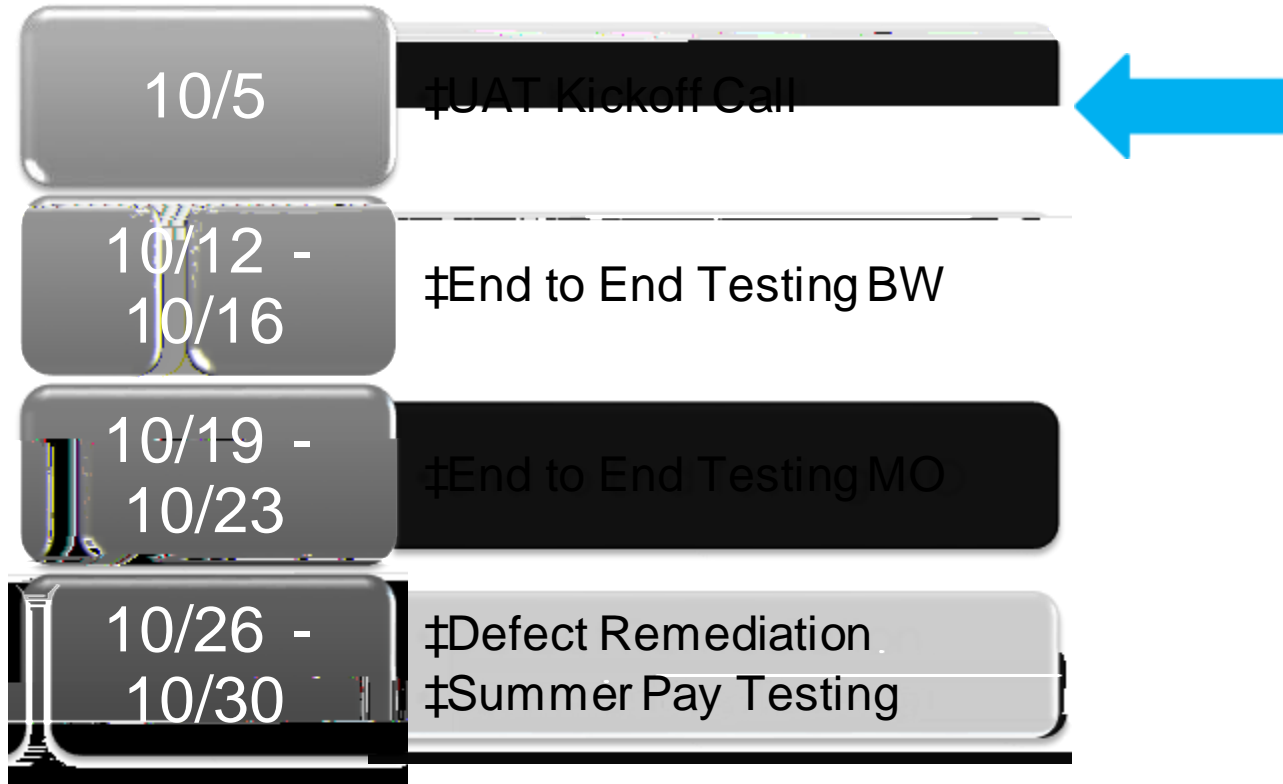


OneUSG Connect will be unavailable:
Beginning 6 p.m. on Friday, December 4th and
will return to service at 7 a.m. on Tuesday, December 8th

OneUSG Connect

Key Dates in OneUSGConnect Release 6.20

Release 6.20 User Acceptance Testing Updates



UAT High Level Testing Flow

Monday

CA tPosition Funding

WFA/HRHires/Direct Hire

WFA/HR Job Data Actions

MSS t Transactions



‡ Required by close of business Tuesday, 10/6:

± Will your institution participate?

± Who is the primary contact for testing?

± What testing cycles will be tested?

± Who will be performing the testing?

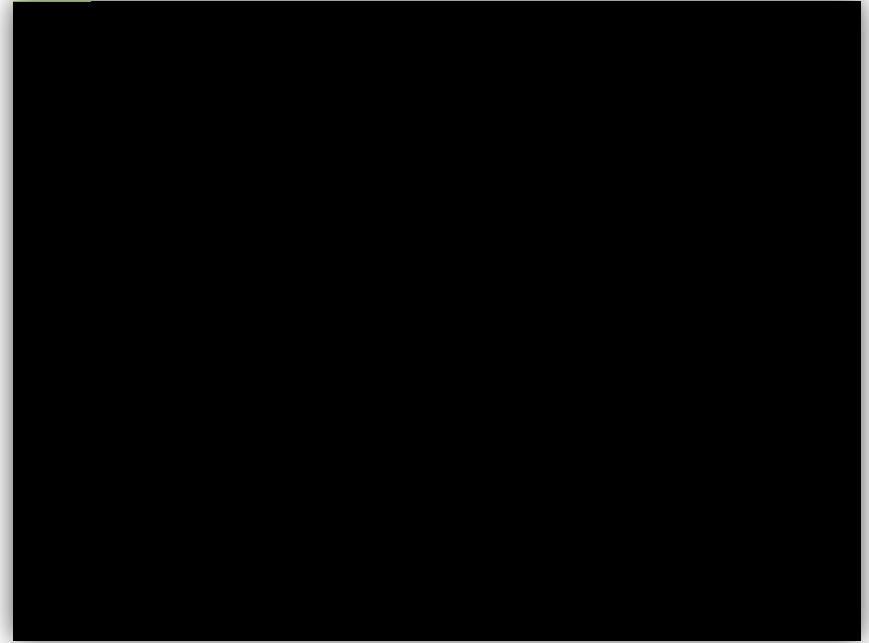
‡ Email: diane.strenkowski@usg.edu

OneUSG Connect

OneUSG Connect Release 6.20 Module Updates and Changes

HREL 6.20 Self Service

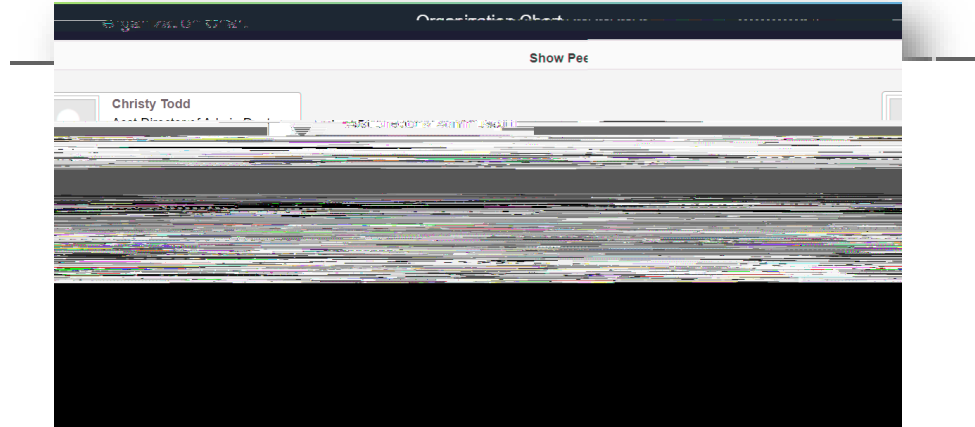
- ‡ New look and feel
 - ± Background and tile colors
 - ± Company Directory
 - ± Web & mobile





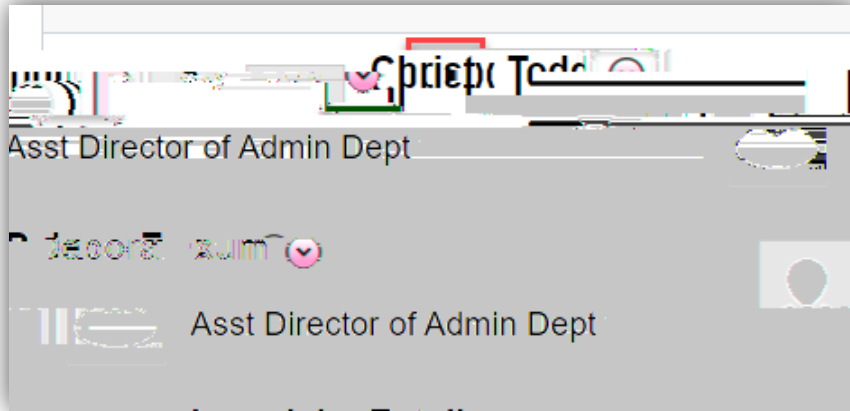
HREL 6.20 Employee Self Service

‡New look to Organization Chart



HREL 6.20 Self Service

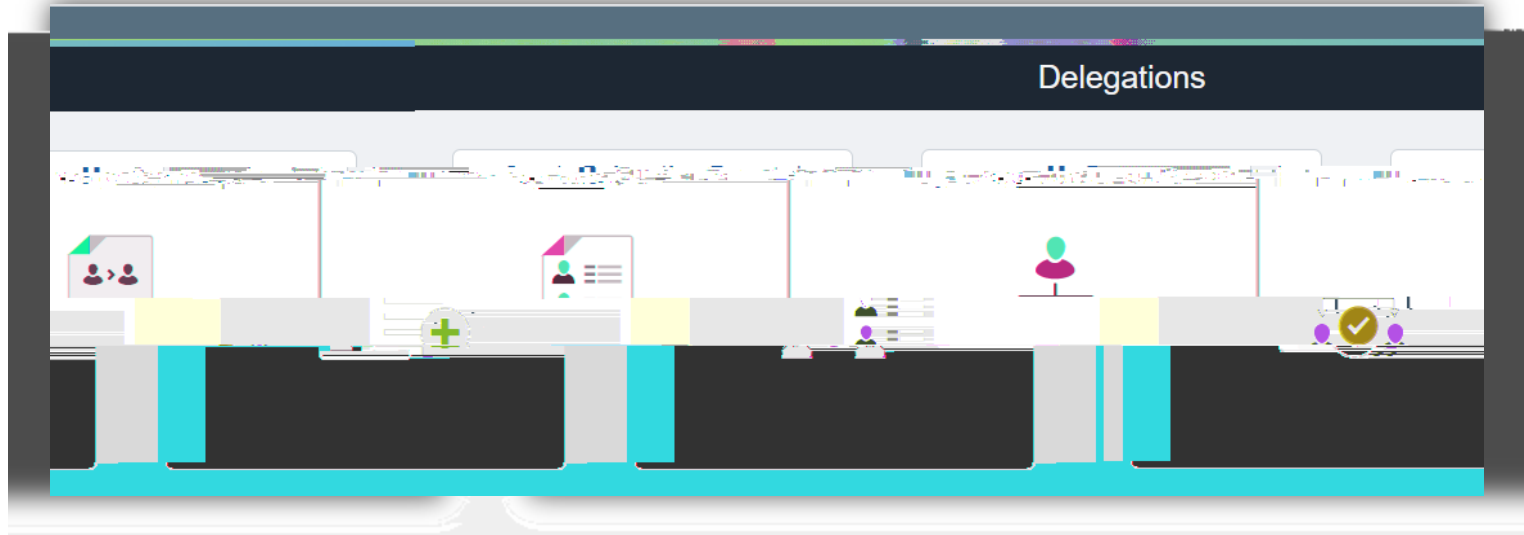
Related Actions Icon is now blue



New header icons notification bell
replaces notifications flag icon

HREL 6.20 Manager Self Service

‡Fluid Delegation experience



Delegations dashboard from "Delegations" tile

HREL 6.20 Process Monitor

The screenshot displays the HREL 6.20 Process Monitor interface. At the top, there are tabs for "Process List" and "Server List". Below the tabs, there are search filters for "User ID", "Type", and "Days". A "Save On Refresh" checkbox is checked. The main area shows a table of process details. The table has columns for "Process ID", "Process Name", "Run Status", "Distribution Status", "Instance", "Process Time", and "Process Name". The first row shows a process with ID 1716050, named "SQR Report", with a Run Status of "Success" and a Distribution Status of "Posted".

Process ID	Process Name	Run Status	Distribution Status	Instance	Process Time	Process Name
1716050	SQR Report	Success	Posted		10/02/2020 6:38:23PM EDT	

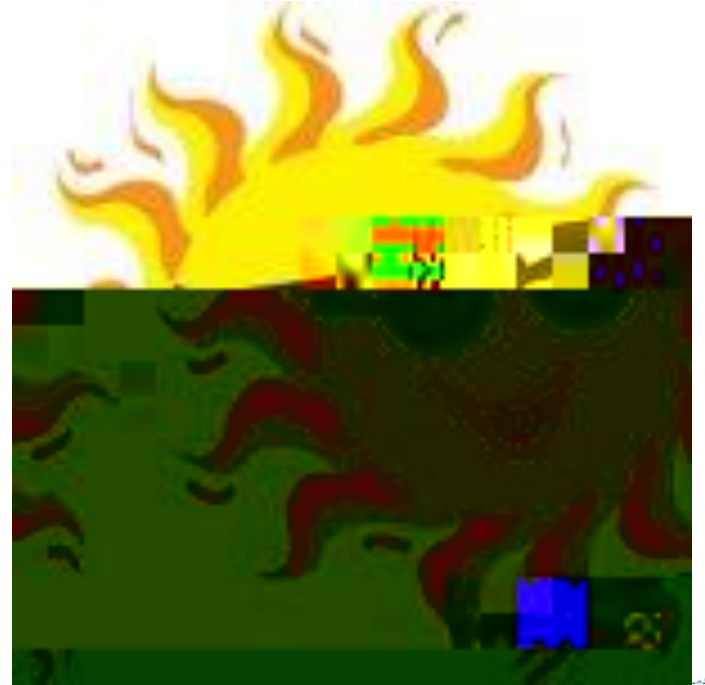
- ‡ New Monthly Payroll Validation Report
- ‡ Paysheet Load enhancements for terminated employees
- ‡

‡ UAT open to institutions that used Summer Pay in
2020

9

Future Summer Pay Enhancements

- ‡ Access via MSS with approval workflow prior to inserting to Additional Pay
- ‡ Spreadsheet upload to Summer Pay page



±Oracle Bugs that will be resolved:

- ±Employee does not show up on company directory
- ±Unable to view paystubs in all browsers on computer
- ±Unable to access paycheck on mobile phone

HREL 6.20 Human Resources

‡ Oracle Bugs that will be resolved:

±Position Data

‡Workweek displaying schedule incorrectly

±Delegation Proxy

‡Unable to submit supplemental pay transactions

HREL 6.20 Absence Management

Enhanced FMLA holiday processing

Forecasting on Voting enabled

Enhanced configuration to process employees on LOA



HREL 6.20 Absence Management

‡ Employees/Managers requesting a regular
(Vacation, Sick, Comp Time, Unscheduled

+

Monthly Employee Cost Detail Report

- ‡ Fiscal Year
- ‡ Fund
- ‡ Combo Code
- ‡

The screenshot displays a complex data table from a PeopleSoft system. The header includes 'Report ID: RCAB006' and 'PeopleSoft' branding. The table contains multiple columns of data, including account numbers and object codes. Annotations are present: a yellow box highlights 'Acct/Obj#' with the value '0100000000 0000', and a blue box highlights '0100000000 0000'. A yellow box also highlights '0100000000 0000'. The table data includes columns for '500_00', 'JAN Y', '2000 JAN - 2000', '000_000', '000_000', and '0.00'. The bottom of the table shows a summary row with values like '0000000000 0000000000' and '0000000000 0000000000'.



- ‡ Oracle Bug that will be resolved:
 - ± Modification done to consider expression defined

OneUSG Connect

User Acceptance Testing Details

Environment Information

‡ System Testing Environment ²HTEST2

- ± Keep in mind if you see anything unexpected that ITS has been system testing in HTEST2 since September 8th

‡ User Acceptance Testing Environment ²HTEST2

- ± We are using the same environment so we can have more effective and timelier defect remediation
- ± No testing can begin, or data staged until Monday, October 12th

‡ Financials Integrations

- ± GA First: HTEST2 > FPRE
- ± UGA: HTEST2 > FINDEV

‡ HTEST2 is a copy of August 18, 2020

Environment Information

‡ Single sign -on URLs are:

± Core: <https://core.htest2.onehcm.usg.edu>

± Self Service: <https://selfservice.htest2.onehcm.usg.edu>

‡ Logging in as user other than yourself:

± <https://core.htest2.onehcm.usg.edu/psp/htest2/EMPLOYEE/HRMS/?cmd=login&languageCd=ENG&>

± <https://selfservice.htest2.onehcm.usg.edu/psp/htest2ss/HCMSS/HRMS/h/?tab=DEFAULT&cmd=login&languageCd=ENG&>

‡ Please test access on Friday, Oct. 9 and work with SSC to resolve access issues.

Monday, 10.12.2020:
9 a.m. kick off call

‡The link to the defect log can be found here:

<https://app.smartsheet.com/sheets/f825jrf>

OneUSG Connect

Technical Information

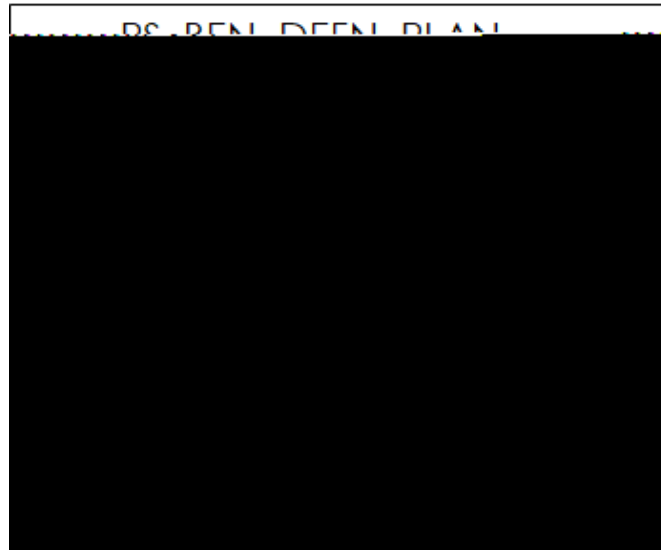
PeopleTools upgrade to version 8.58

- PeopleTools : PeopleSoft's proprietary software underlying the application

‡ : H X S J U DeC...PeopleTools to:
2

+

‡ Tables that will be changed as of Release 6.20:



OneUSG Connect

Questions?



ITS OF THE UN